



Idaho Falls:

5800 So Yellowstone Hwy (208) 522-5247

Pocatello:

1300 East Oak Street (208) 232-7985

www.tcgardens.com



Limoncello™ Barberry
Berberis thunbergii 'BailErin'

Height: 4 feet

Spread: 4 feet

Sunlight: ○ ●

Hardiness Zone: 4

Other Names: First Editions Limoncello Barberry

Group/Class: First Editions Series

Description:

Stunning chartreuse foliage with unusual, dotted red margins, turning to brilliant orange, yellow, and red in fall, ; give some protection from afternoon sun; a great landscape specimen, or garden accent

Ornamental Features

Limoncello Barberry has attractive chartreuse foliage edged in red which emerges yellow in spring. The glossy oval leaves are highly ornamental and turn outstanding shades of yellow, orange and red in the fall. Neither the flowers nor the fruit are ornamentally significant.

Landscape Attributes

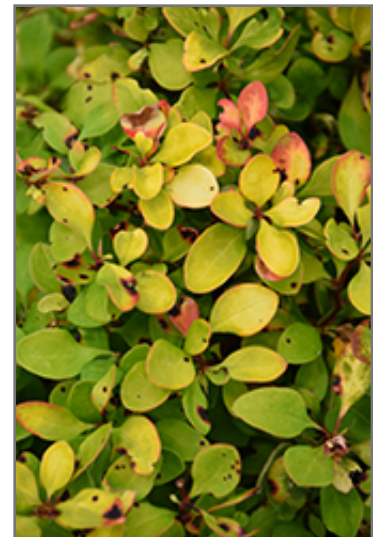
Limoncello Barberry is a dense multi-stemmed deciduous shrub with a more or less rounded form. Its relatively fine texture sets it apart from other landscape plants with less refined foliage.

This is a relatively low maintenance shrub, and can be pruned at anytime. Deer don't particularly care for this plant and will usually leave it alone in favor of tastier treats. Gardeners should be aware of the following characteristic(s) that may warrant special consideration;

- Spiny



Limoncello Barberry
Photo courtesy of NetPS Plant Finder



Limoncello Barberry foliage
Photo courtesy of NetPS Plant Finder



Idaho Falls:

5800 So Yellowstone Hwy (208) 522-5247

Pocatello:

1300 East Oak Street (208) 232-7985

www.tcgardens.com

Limoncello Barberry is recommended for the following landscape applications;

- Accent
- Mass Planting
- Rock/Alpine Gardens
- General Garden Use
- Container Planting

Planting & Growing

Limoncello Barberry will grow to be about 4 feet tall at maturity, with a spread of 4 feet. It tends to fill out right to the ground and therefore doesn't necessarily require facer plants in front. It grows at a fast rate, and under ideal conditions can be expected to live for approximately 20 years.

This shrub does best in full sun to partial shade. It is very adaptable to both dry and moist growing conditions, but will not tolerate any standing water. It is considered to be drought-tolerant, and thus makes an ideal choice for xeriscaping or the moisture-conserving landscape. It is not particular as to soil type or pH, and is able to handle environmental salt. It is highly tolerant of urban pollution and will even thrive in inner city environments. This is a selected variety of a species not originally from North America.

Limoncello Barberry makes a fine choice for the outdoor landscape, but it is also well-suited for use in outdoor pots and containers. Because of its height, it is often used as a 'thriller' in the 'spiller-thriller-filler' container combination; plant it near the center of the pot, surrounded by smaller plants and those that spill over the edges. Note that when grown in a container, it may not perform exactly as indicated on the tag - this is to be expected. Also note that when growing plants in outdoor containers and baskets, they may require more frequent waterings than they would in the yard or garden. Be aware that in our climate, most plants cannot be expected to survive the winter if left in containers outdoors, and this plant is no exception. Contact our store for more information on how to protect it over the winter months.